

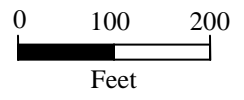
**Cross Section 1**

Looking Northeast  
Bootheel Project  
Albany County, Wyoming

Drawn: IO May 2008

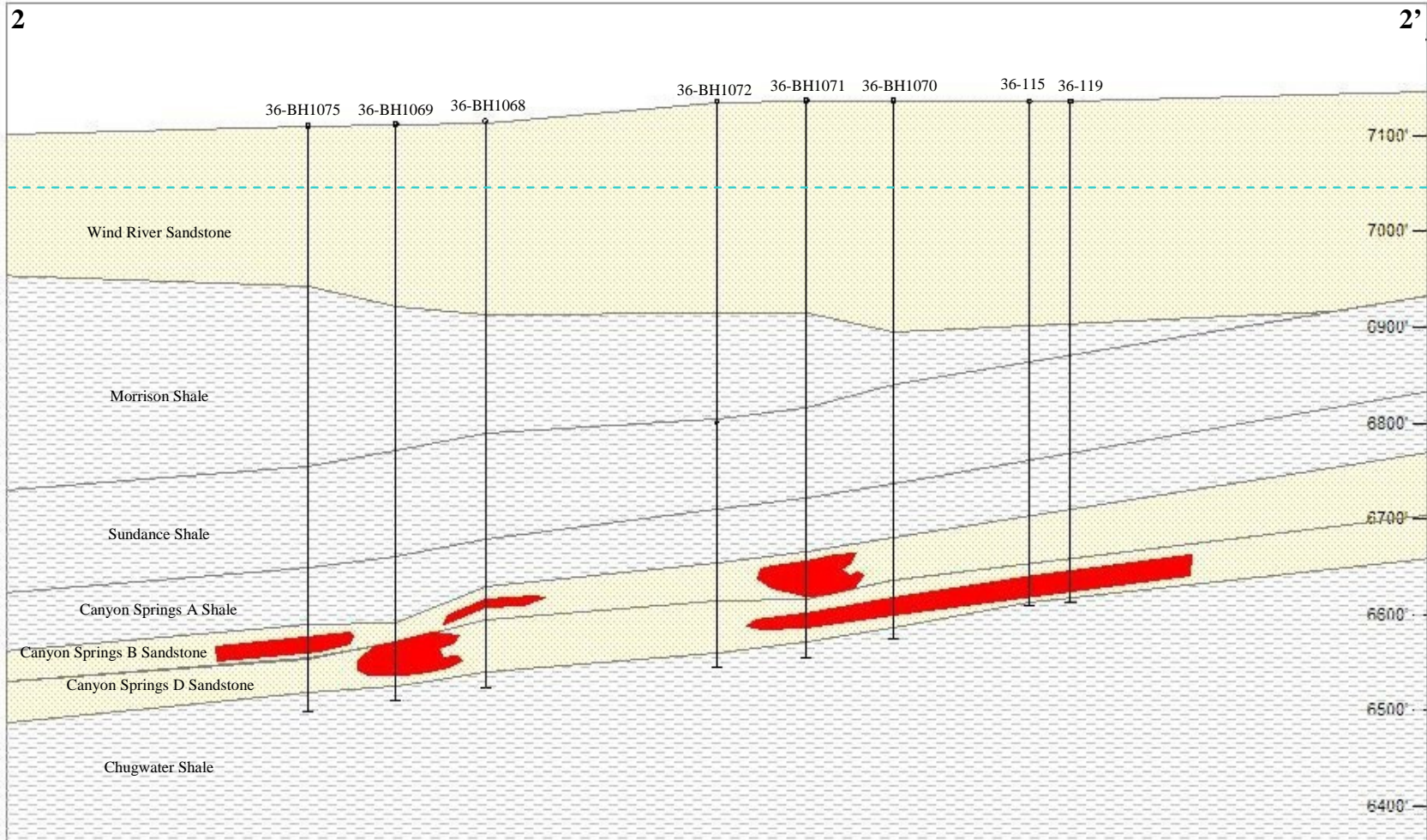
- Sandstone
- Shale / Siltstone
- Mineralization (U3O8)
- Water Table

Existing Drillhole



Horizontal = Vertical










**Cross Section 2**

Looking Northwest  
Boothel Project  
Albany County, Wyoming

Drawn: IO May 2008

-  Sandstone
-  Shale / Siltstone
-  Mineralization (U3O8)
-  Water Table

 Existing Drillhole

0 150 300  
Feet  
2x Vertical Exaggeration



